

Brasil



Statistics of the Province

Religious:

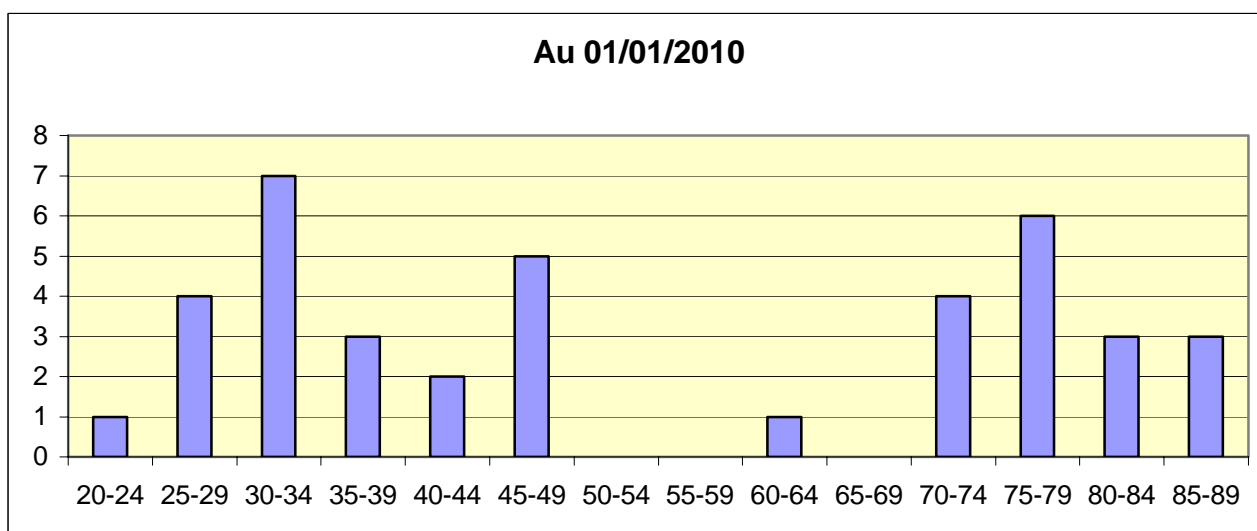
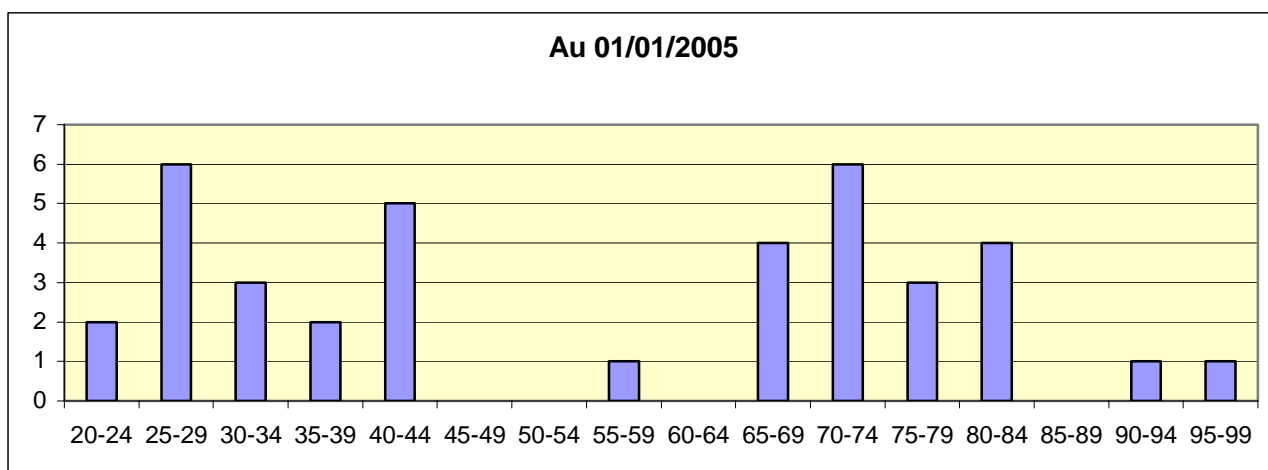
	Religious Priests	Religious Perp. Prof.	Religious Temp. Prof.	Total	Novices	Postulants
on 01.01.99	29	04	04	37	01	06
on 01.01.05	26	04	04	38	01	07

Communities:

		Local Communities		Regional Communities		Attached	Isoled (*)
		Communities	Religious	Communities	Religious		
Country	Brasil	06	38			02	
Country							
Country							
Total	01.01.05	06	38				
	01.01.99	07	37				

Since 1999: 1 Houses have been closed
 0 Were opened
 0 Communities merged

Pyramid of ages (1999 and 2004) with a Projection to 2010.



Evolution of the Province since 1999

The Country: The five outstanding events of the last six years

- Commemoration of the 500th anniversary of the arrival of Europeans in Brazil : 1500-2000.
- Election of a working man to the Presidency of the Republic, Luiz Inácio Lula da Silva, on October 28, 2002.
- Inauguration of the first working man President of the Republic on January 1, 2003.
- Wave of assassinations of “street people,” especially Praca da Sé,
- Sao Paulo, during the second half of 2004.

L'Église

Three difficulties:

- Strong tendency “Council of Trent” at the heart of the Episcopacy. The last appointments of bishops confirm this model.
- Emptying of the Catholic Church and other historical churches, especially on the part of young people and increasing presence in the churches “Pentecostal Sects”
- Neo-conservatism of the clergy , with Pentecostal tendency.

Four signs of hope:

- Perseverance on the part of certain sectors of the Church to follow the model of Church set forth by Vatican II.
- Trial to set up ecumenical projects by the Church, as for example, the week of unity, the Campaign of Fraternity (Lent) and CEDI (ecumenical organization and its bulletin.
- Effort of ecclesial communion.
- Increase of native vocations.

The Assumption Situation

The Provincial community

The Province is composed of 6 communities : 2 at Campinas, one of which is for formation and the other for aged religious. The formation community is located in two houses: one at 155 Orlando Randi Street, Vila Lemos. At that address live the young people undergoing an experimentation of community life (juvenile for aspirants). The other house is at 550 Dr. Manoel Afonso Avenue. Here live first and second year postulants.

At Sao Paulo one community resides at two addresses: the Traditional House of Tatuapé where the Provincial headquarters functions and also the house of formation for professed of first and second years.

Recently a new residence was installed at Helena Garden at the periphery of the city for the young religious of third and fourth years of profession.

At Eugenopolis we have a community oriented towards pastoral care, in which is to be found a formation center for lay managers, at the old Assumptionist seminary. This

community is also charged with caring for a “maison d’accueil” for young people who are looking us over.

At Espirito Santo de Pinhal lives another Assumptionist community. There we have a group of aged religious, all of them over 70 years of age.. This community is also responsible for welcoming young people who are searching.

Finally, we have the Rio de Janeiro community. It is entirely devoted to parochial pastoral care.

There is a religious who lives alone, but he is attached to the community of Espirito Santo de Pinhal.

One can see that of the six communities of the Province, five of them are linked directly to formation.

The Council is made up of young religious. There is only one experienced religious: the Provincial bursar.

The greater part of the Council’s work lay with the chief priorities and challenges of the Province.: care of vocations and formation, collaboration with lay people, insertion, mission and self-financing.

The Council has a project for the next few years : insisting on priorities, breathing stronger vitality into the commissions so that they will be strongpoints at the heart of the Province.

We have three problems with difficult solutions :

1. the increasing number of young people in formation and the small number of formators.
2. formation requires great expenditures and we have small resources.
3. give new life to the community at Espirito Santo de Pinhal.

The Canonical Visitation

Our canonical visitation took place between June 18 and July 4, 2002. This visitation was much appreciated by the whole Province. Not only did it bring us new animation, but in it we experienced a free and fraternal presence. The visitation gave new strength to the commissions, an invitation to experience more often our provincial assemblies, a franker and friendly climate in our dialogues.

We have not yet succeeded in finding those moments when the provincial community might meet together freely: anniversaries, commemorations, etc.

Financial life

The Province’s financial life is very fragile. The formation programs survive only through the solidarity fund. Our reserves do not surpass \$350,000 US.

We seek to build up sources of revenue, but our “*Procure*” is in its trial stage.

Personal evaluation

The Province

Our Province is young. First of all it was founded hardly six years ago as a province.. Also the greater number of persons in charge of vital responsibilities are young.

Finally, the greater number of the religious are in formation.

So, our Province shows a quite particular face. It lies between a dream and a reality. Between the hopes of some and the doubts of others. Despite everything, we can say that we have already traveled far : perseverance among the young professed religious is good and there exists a high level of acceptance and dialogue between the younger and the older religious. As for pastoral care, we are still very much tied to parish pastoral care. Yet, there exists a good frame of mind for reflection on the matter. Our principal preoccupations at the moment are the lack of formators and the financial problem.

The Provincial Chapter

Work for the Provincial Chapter was done in two steps: one before and the other during the Chapter

Before, the local Chapters were held in which the communities had the opportunity to audit their progress. Two meetings were held with the lay people functioning in our communities. A committee of three religious formulated a technical questionnaire for our parishes to get a better view of our results. The commissions : Formation and Pastoral Care of Vocations, Office of Development

(self-financing) and the lay people presented their suggestions for the years ahead.

It is on the basis of the work done in our communities, the study of our parishes, and the proposals of the commissions that we made progress in the work of the Chapter.

All through the Chapter we were able to count on three counselors: Analysis of the socio-political reality, the ecclesial reality, the reality of consecrated religious life, today. All this work was carried on in an atmosphere of close collaboration, listening and openness of mind. The ensemble of the Province has an open mind for the new.

Orientations of the General Chapter

As for the directives of the General Chapter, three were well assimilated and put into practice, but at least two of them have been neglected, either for lack of interest or for lack of personnel.

1. We have progressed in the area of formation and pastoral care of vocations.
2. Receptivity opened for formation to internationality.
3. A presentation of our charism to the lay people and openness to working in collaboration with them.

We remained paralyzed on two points :

1. There has been no systematic work for a clear *projet*, for what concerns Justice and Peace, and solidarity with the poor.
2. The Center of Assumptionist Spirituality did not get the momentum expected and remains immobile.

The Provincial Chapter

The atmosphere of dialogue and openness with one another. A time of getting together and of communal exchanges, in short, an atmosphere of total fraternity. For the first time we had the participation of four lay people during the first two days of the Chapter. We

were also able to count on the active participation of our secretary Geralda every day of the Chapter.

The most important issues were: Formation and Pastoral care of Vocations, co-participation of lay people, insertion, mission and self-financing.

The principal decisions and directives were :

- That the religious be from the start alert and engaged in the mission.
- To take on the pastoral care of the young as the Province's pastoral priority .
- Broaden the pastoral care of Vocations and thus animate as well the pastoral care of the young in the Province.
- To adopt the project presented by the lay people (they gave us a concrete proposal).
- That each community take up the studies made in the parishes so as to ponder three points: Between Pastors, in the communities, and between these and the laity.
- Create times and locales for animation et appreciation of our insertions and missions.

Fr. Marcos Bento de Souza, a.a
Provincial Superior